

Pioneer

**ALL-NEW** **TS-D1740C**  
**PIONEER D-SERIES** 16CM 2-WAY COMPONENT SPEAKERS



**450W**  
**MAX POWER**

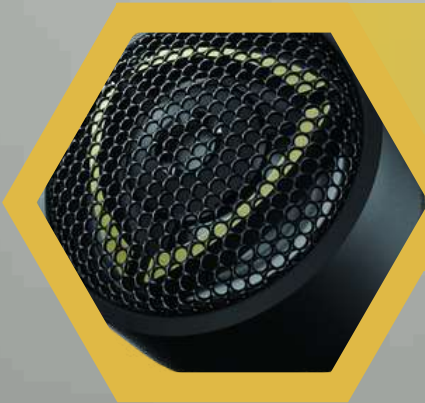


Pioneer

# TECH



# POWER



# LUXURY



*"Move the Heart and Touch the Soul"*

Pioneer Electronics Asiaticenter Pte Ltd | [www.pioneercarentertainment.com](http://www.pioneercarentertainment.com)



# A SYMPHONY OF LUXURY

## D All New series SPEAKERS

音を再創造。贅を再定義。| Sound Reimagined. Luxury Redefined.



Tweeters

TS-D1740C  
(16cm 2-Way Component)

Passive Crossover  
Network



Pioneer-Engineered  
New D-Series Design



Superior Vocal  
Powerful Bass



Specially Designed  
Yellow Glassfiber



Specially Designed  
Yellow Glassfiber

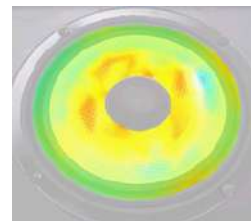
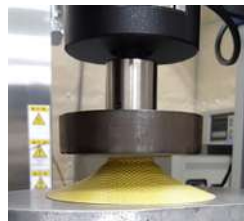
### A New Standard of Sound Luxury

The **new D-Series speakers** feature an exquisitely crafted yellow glass fiber finish that enhances their sleek, refined appearance. Every element— from precision engineering to premium visual design— reflects Pioneer's dedication to delivering not only exceptional sound quality, but a complete audio and aesthetic experience.

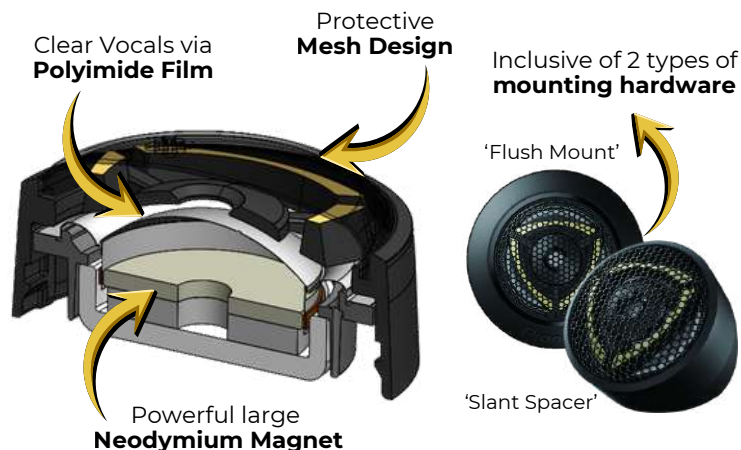


### Superior Vocal, Powerful Bass

Crafted from a **lightweight and highly rigid** iconic yellow fiber cone, reinforced through **precision resin infusion**. The TS-D1740C is engineered to withstand high pressure, delivering tight, controlled, and powerful bass. Designed to **suppress unwanted vibrations** while distributing force evenly across the cone, resulting in cleaner mids, brighter highs, and stunning vocal clarity.



### TS-D1740C Sound Design Structure



Dedicated Crossover Network  
with 3-level adjustment

- **Cut-off**  
Woofer: -6db / oct.  
Tweeter: -12db / oct.
- **Attenuator**  
-3dB / 0dB / +3dB
- **Cord**  
From Amp: 300mm  
To Woofer: 300 mm  
To Tweeter: 1000mm

"Move the Heart and Touch the Soul"



### Iconic Yellow Glass Fiber

- Lightweight & highly rigid
- Suppresses propagation of unnecessary sound
- Stronger punch and bass sound

### Rubber Edge

- High strength & elasticity

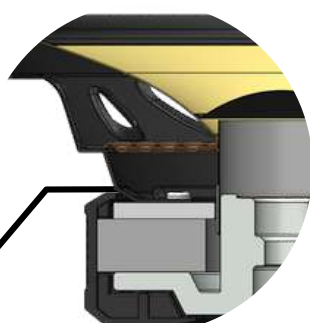
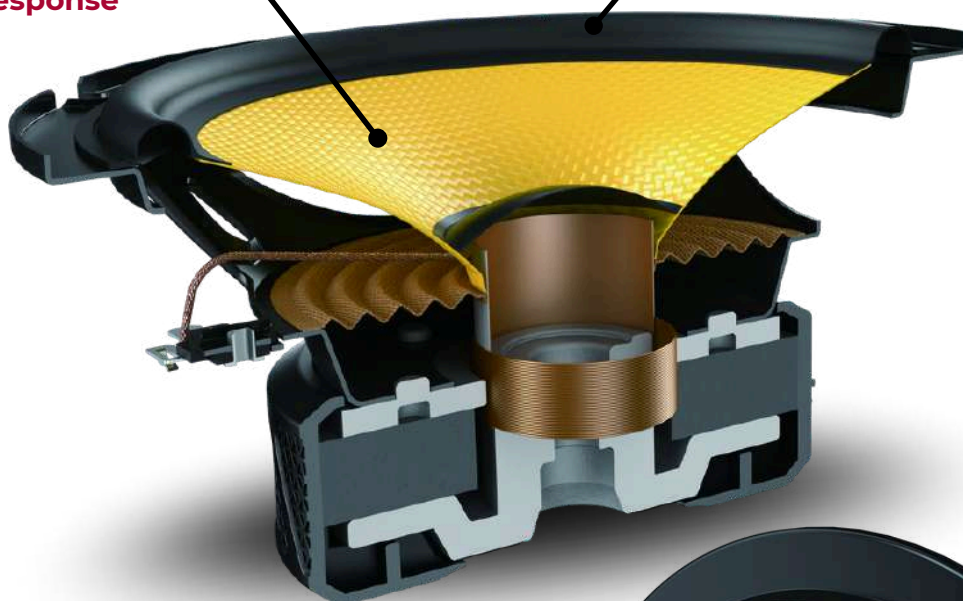


**Max Power: 450W**  
(100W Nominal)

**Frequency Response**  
29 Hz to 33K Hz

**Sensitivity**  
90 dB

**Impedance**  
4  $\Omega$



### Large Magnet

- Specially designed magnetic circuit providing high-power output
- Improved low-frequency reproduction and low distortion even at high volumes

**Ferrite**  
330g

**Mounting Depth**  
69mm (with mounting cover)

**Cut-Out**  
 $\varnothing$  144mm



### Truss Texture - dynamic, intricate triangular structure

- The magnetic cover features a regular arrangement of smaller triangles within a larger triangle, visually conveying the world of powerful bass and delicate sound.

"Move the Heart and Touch the Soul"