

# ***Pioneer***

## **VREC-H320SC**

## **VREC-H320SC-D**

### **DASH CAMERA**

### **Quick Start Guide**

**PIONEER INDIA ELECTRONICS PRIVATE LIMITED**

Unit No. 3, 10th Floor, Ambience Corporate Tower – 2,  
Plot no. 3, Ambience Island,  
NH-8, Gurugram, Haryana 122002, India  
Tel : +91 124 4636100

This guide is intended to explain you the basic functions of this unit. For details, please refer to the Owner's manual stored on the website.

***<https://pioneer-india.in/>***

#### **After-Sales service for Pioneer Products**

Please contact the authorized Pioneer dealer from which you purchased this unit or an authorized Pioneer service company for after-sales service or questions you may have about the product. You may contact Pioneer directly as follows:

#### **PIONEER INDIA ELECTRONICS PRIVATE LIMITED**

Unit No. 3, 10th Floor, Ambience Corporate Tower – 2, Plot no. 3, Ambience Island, NH-8, Gurugram, Haryana 122002, India

**Tel :+91 124 463 6100 / Toll Free: 1800-103-5787**

For Warranty information, please see the Limited Warranty sheet included with this unit.

## Precautions

Information for users on collection and disposal of old equipment and used batteries.

(Symbol for equipment)



Symbol example for batteries



These symbols on the products, packaging, and/or accompanying documents mean that used electrical and electronic products and batteries should not be mixed with general household waste. For proper treatment, recovery and recycling of old products and used batteries, please take them to applicable collection points in accordance with national legislation.

By disposing off these products and batteries correctly, you will help to save valuable resources and prevent any potential negative effects on human health and the environment which could otherwise arise from inappropriate waste handling.

For more information about collection and recycling of old products and batteries, please contact your local municipality, your waste disposal service or the point of sale where you purchased the items.

## Warning

- Do not install this product in your vehicle if its location or use would obstruct the driver's clear view of the road or the operation of any vehicle airbag. It is also the driver's responsibility to know and comply with the laws rules, and regulations of the driving location, including, for example, passenger privacy rights. and not to use the device in any location where its installation or use is prohibited.
- Do not use this device to make audio or video recordings prohibited in the location where you are using this product. Always provide notice that is required in your location that video and audio recordings (if audio is in use) are being made and obtain appropriate consent and authorization from the persons being recorded. Some states, provinces and municipalities require posting a visible written notice that occupants and conversations are being recorded.

## Safety precautions

Certain country, state and provincial laws may prohibit or restrict the placement and use of this product in your vehicle. Please comply with all applicable laws and regulations regarding the use, installation and operation of this product. It is the user's responsibility to comply with all applicable laws, rules, regulations and ordinances.

### **WARNING**

- Do not allow this product to come into contact with liquids. Electrical shock could result. Also, damage to the product, smoke, and overheating could result from contact with liquids.

**Before using this product, be sure to read and fully understand the following safety information:**

- Do not operate this product if doing so will divert your attention in any way from the safe operation of your vehicle. Always observe safe driving rules and follow all existing traffic regulations. If you experience difficulty in operating this product or reading the display, park your vehicle in a safe location and apply the parking brake before making the necessary adjustments.
- Certain functions (such as viewing of screen and certain button operations) offered by this product could be dangerous (possibly resulting in serious injury or death) and/or unlawful if used while driving.

**Precautions before connecting the system:**

### **WARNING**

- Firmly install this product so it does not fall off the inside of the front windshield. If this product is not firmly installed, it may fall off the windshield while driving and cause an accident. Periodically inspect this product.
- Pioneer recommends that only authorized service company personnel, who have special training and experience in mobile electronics, set up and install this product.
- Secure all wiring with cable clamps or electrical tape. Do not allow any bare wiring to remain exposed.

**Precautions before installation:**

### **WARNING**

- Do not install this product where it may:

- I. Obstruct the driver's vision.
- II. impair the performance of any of the vehicle's operating systems or safety features, including airbags, hazard lamp buttons or
- III. impair the driver's ability to safely operate the vehicle.

- Never install this product in front of or next to the place in the dashboard, door, or pillar from which one of your vehicle's airbags would deploy. Please refer to your vehicle owner's manual for reference to the deployment area of the frontal airbags.

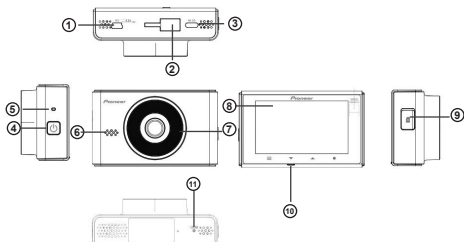
### **CAUTION**

- To ensure proper installation, be sure to use the supplied parts in the manner specified. If any parts are not supplied with this product, use compatible parts in the manner specified after you have the parts' compatibility checked by your dealer. If parts other than supplied or compatible ones are used, they may damage internal parts of this product or they may work loose, and the product may become detached. Also, please note that the product may not function properly in case non-compatible accessories are used.
- Do not install this product in places subject to high temperatures or humidity, such as:
  - I. Places close to a heater, vent, or air conditioner.
  - II. Places that may be exposed to rain, such as close to the door.

## Packaging Contents

1N Dash Camera [VREC-H320SC or VREC-H320SC-D], 1N Power Adapter, 1N Power Cable, 1N Electrostatic Film, 1N Mount With Double-Sided Adhesive, 1N Quick Start Guide, 1N Warranty Card

## Product Appearance



- |   |                              |
|---|------------------------------|
| 1. Rear camera connection terminal (to connect rear camera cable) | 5. System Indicator          |
| 2. Adhesive Mount Cradle connection point                         | 6. Speaker                   |
| 3. Power port (to connect power cable)                            | 7. Camera Lens               |
| 4. ON/OFF Power Button  | 8. LCD Display               |
|   | 9. microSD™ Card Slot        |
|   | 10. Function Touch Button(s) |
|   | 11. Reset                    |

## Product Appearance

**Resolution:** 1080p; Full HD

**Display Screen:** LCD; 3 inches; 7.62 cm

**Wi-Fi:** In-built (2.4 GHz)

**G-sensor:** Supported

**Storage:** microSD Card (Class 10 or above; up to 512 GB)

**Power Supply:** 5 V, 1.5 A (via cigarette charger slot of vehicle or via Hardwire Kit)

**Power Connector:** USB Type-C®

**Power Back-up:** Super Capacitor

## Status Display

The status display shows the operating status of this product.



- 1 Recording in progress
- 2 Elapsed recording time
- 3 Event recording status
- 4 Parking mode
- 5 Sound recording\*1
- 6 Wi-Fi connection status\*2
- 7 GPS reception status\*3
- 8 Date/Time/Vehicle speed

\*1 A red "I" is displayed when sound recording is set to OFF.

\*2 During a Wi-Fi connection, this is displayed in green, and when Wi-Fi is disconnected, this is displayed in white. A red "x" is displayed when Wi-Fi connection is set to OFF.


\*3 During GPS reception, this is displayed in green, and when GPS cannot be received, this is displayed in white.

## System Indicator Display

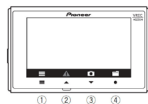
The operating status of this product is displayed with the system indicator.

System Indicator	Illuminated green	Illuminated red	Blinking red	Not illuminated
Menu Displayed	—	—	—	○
Normal Recording	○	—	—	—
Recording Event	—	○	—	—
Under parking surveillance	—	○	—	—
Error Has Occurred (Including microSD Card not inserted)	—	—	○	—

## Function Touch Button(s)

The functions of the function touch button(s) are indicated by the icons displayed at the bottom of the screen. The functions of the buttons will depend on the displayed screen. (Icons are not displayed on some screens.) In the playback screen or MENU screen, pressing the  function touch button returns you to the previous screen.

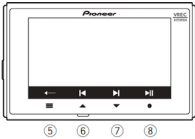
## Recording



- 1 Main menu display
  - 2 Manual recording of events (Event Recording)
  - 3 Take photo
  - 4 Playback recorded media
- Switching of camera video\*

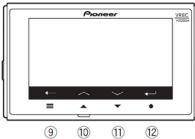
\* Switching between the Dash Camera main unit image and the 2nd camera (sold separately) image is only possible if the 2nd camera (sold separately) is connected.

## During playback



- 5 Back
- 6 Previous file
- 7 Next file
- 8 Play/pause, delete

## During MENU screen display



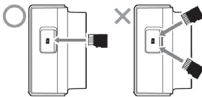
- 9 Back
- 10 Up
- 11 Down
- 12 Confirm

## Inserting and Ejecting the microSD Card

Turn OFF the power to this product when inserting and removing the microSD card.

### Inserting the microSD Card

Hold the top edge of the microSD card, position the microSD card so that the label is facing the lens side of this product, and slowly insert it into the microSD card slot until it clicks.



### ⚠ CAUTION

Do not insert the microSD card at an angle. Doing so may cause damage.

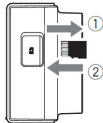
### Note:

1. microSD card to be purchased separately.
2. Use a class 10 or above microSD card for proper functionality.
3. You will not be able to record videos without microSD card.
4. You shall be prompted to format the microSD card after inserting it first time into the dash camera.

### Ejecting the microSD Card

Slowly push in the top edge of the microSD card until it clicks (1).

The lock will be released. Pull out the microSD card (2).



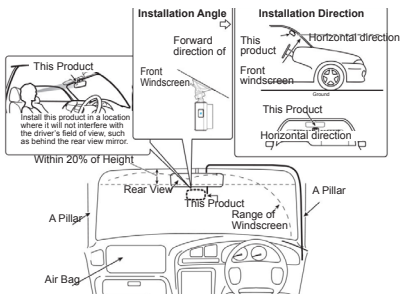
### ⚠ CAUTION

Ensure care is taken when handling the microSD card,

## Specified Installation Position on Front Windshield

When installing this product in your vehicle, please be mindful of the position on the front windshield. Install in a way that satisfies any prescribed or applicable laws at your location and also following conditions:

- Install the product at a place where it doesn't obstruct any of the airbag deployment zone. The ideal location is behind the rear view mirror out of the driver's view as shown in the illustration below.
- A position where this entire product is within 20% of the top edge of the height of the front windshield (range within 20% of the actual length, excluding parts overlapping weatherstrips, moldings, etc. and masked parts) or are in the shadow of the rear-view mirror as viewed from the driver's seat. Note that "20%" as described above is a rough estimate. Please install the product in accordance with your location's laws and regulations.
- A position where the lens part of this product is within the wiping range of the wiper.
- A position where the lens part of this product does not hang over the sunshade and black ceramic lines/black ceramic pattern.
- A position where this product faces in the horizontal direction to the front and side to side.
- A position where the cigarette lighter USB power cable can be routed without unnecessary force.

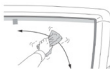


Always install this product in the specified installation position to ensure a safe field of view while driving and to achieve full performance from the product. Pioneer is not liable for any damages due to faulty or improper installation or use of the product



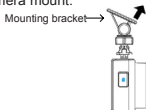
## Installing the Dash Camera

1. Clean the installation area of dirt and oil using a cleaning cloth.

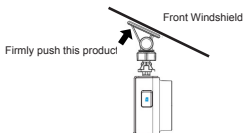


2. Install this product.

Peel off the double-sided tape release paper from the dash camera mount.



Install at the specified position of the front windshield.

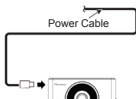


### CAUTION

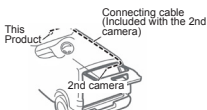
- Make sure that the surface of the front windshield is clean and dry, before attaching the dash camera mount.
- Use extreme care as the double-sided tape on the dash camera mount is extremely strong, and should not be reapplied once it has been applied.
- To ensure the installation strength of the adhesive tape, leave this product for 24 hours after application before using it.

3. Connecting the cables.

- Connect the power cable to the power adapter and main unit.



- Route the power cable to the passenger seat side



- Connect the Cigarette charger USB power adapter to the vehicle accessory socket. Fully insert this into the vehicle accessory socket to make a good connection. (The location of the accessory socket will differ depending on the vehicle).
- Please route the cable of rear camera via ceiling only.

### CAUTION

The accessory socket may be extremely hot immediately after connecting the adapter into the accessory socket. The tip of the power cable may melt or short circuit if it is plugged in while the socket is hot. Wait for the socket to cool before plugging in the cigarette lighter power cable.

4. Adjust the angles

Adjust the angles of this product so that video outside the vehicle is properly displayed.



5. Switch on the ignition

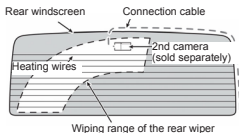
Switch on the ignition to check if the installed product is working as expected.

## Recommended Installation Position on Rear Windshield

For installation on the rear glass, a 2nd camera (sold separately) is required. If installing only this product, then skip the instructions regarding installation on the rear glass.

When installing the 2nd camera (sold separately) on the inside of the rear window, installation in a vehicle and in a position that satisfies all of the following conditions is recommended.

- A position where the lens part of the 2nd camera (sold separately) is within the wiping range of the wiper.
- A position where the 2nd camera (sold separately) faces in the horizontal direction to the rear and the lens is in a central position on the rear windscreen.
- A position where the lens part of the 2nd camera (sold separately) and the double-sided tape do not overlap the heating wires.
- A position where the 2nd camera (sold separately) connection cable can be routed without unnecessary force.



### Installing the 2nd camera (sold separately)

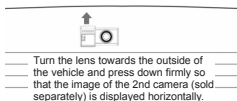
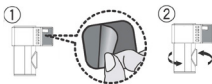
The top and bottom of the image can be set according to the mounting direction of the 2nd camera (sold separately).

#### 1. Clean the installation area of dirt and oils using the included



#### 2. Install the 2nd camera (sold separately).

- ① Peel off the double-sided tape release paper from the 2nd camera (sold separately).
- ② Adjust the lens so that it faces outside the vehicle, and install at the specified position on the rear windshield.



### CAUTION

- Make sure that the surface of the rear windshield is clean and dry, before attaching the rear camera.
- Use extreme care as the double-sided tape on the rear camera is extremely strong, and should not be reapplied once it has been applied.
- To ensure the installation strength of the adhesive tape, leave this product for 24 hours after application before using it.

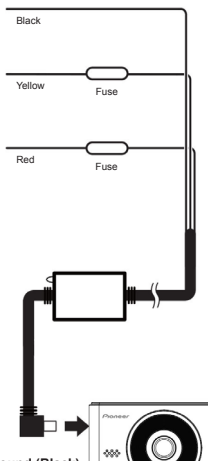
#### Note

- A protective film is applied to the lens when the product is purchased. Peel off this film.

## Direct connection with Vehicle Battery (Parking mode)

Be sure to disconnect the  $\ominus$  terminal of the vehicle's battery before connecting

Parking mode can be enabled on this dash camera for which user have to purchase a Hardwire Kit and get it installed by a trained automobile technician. By using the power cable to draw power directly from the vehicle, this product can detect and record vehicle movement caused by vibration even when the vehicle's engine is turned OFF. It is recommended to use a power cable (or Hardwire Kit) with fuse.



### Ground (Black)

Securely connect to the metal part of the vehicle body. To prevent noise, connect as close to the navigation unit as possible.

### + Battery power supply (Yellow)

Always connect to the power circuit supplied with power from the battery, regardless of whether the vehicle engine switch is ON or OFF.

### Accessory power supply (Red)

Connect to the power circuit supplied with power when the vehicle engine switch is turned to the ACC position. Never install the accessory power supply to a vehicle that does not have an ACC position on the engine switch. Doing so may lead to a dead battery.

### Ground (Black)

Securely connect to the metal part of the vehicle body. To prevent noise, connect as close to the navigation unit as possible.

### + Battery power supply (Yellow)

Always connect to the power circuit supplied with power from the battery, regardless of whether the vehicle engine switch is ON or OFF.

### Accessory power supply (Red)

Connect to the power circuit supplied with power when the vehicle engine switch is turned to the ACC position. Never install the accessory power supply to a vehicle that does not have an ACC position on the engine switch. Doing so may lead to a dead battery.

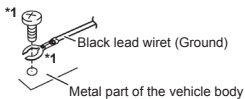
### Note:

Connect the red and yellow lead wires to the terminals after wiring through the vehicle's fuse unit.



### Connection Precautions

To prevent fuming and damage to the product, be sure to first securely connect the black lead wire (Ground) of this product to the metal part of the vehicle body. Connect separate black lead wires (Ground) for products with a high current consumption such as a power amplifier. When setting up connections all at once, there is a risk of fuming or damage to the product when screws loosen or come off completely.



\*1 Not Supplied with the product

Parking Mode provides added security by monitoring your vehicle when it is parked, and the engine is turned OFF. This mode is especially useful for capturing video footage of incidents such as theft, vandalism, or collisions that may occur while your vehicle is unattended. When activated, the dash camera enters a state of low power consumption and starts recording if vibration (detected by the G-sensor) or motion is detected.

**Connecting to Dash Camera App**

1. Scan the code for the Companion App on Google Play or App Store



2. Download the App
3. Sign up and follow pairing instructions.
4. Default Wi-Fi Name (SSID): Pioneer\_H320SC\_XXXX
5. Default password: 12345678

**Note**

- \* XXXX shall be a unique alphanumeric entity.
- Supports Android™ OS version 11 & above, iOS version 13 & above.

**Trademarks and Copyrights**

- USB Type-C® and USB-C® are registered trademarks of USB Implementers Forum.
- IOS is a trademark or registered trademark of Cisco in the U.S. and other countries and is used under license.
- App Store is a service mark of Apple Inc., registered in the U.S. and other countries and regions.
- Android and Google Play are trademarks of Google LLC.
- microSD, microSDHC and microSDXC Logos are trademarks of SD-3C LLC.

